



Medicon Ireland Limited
 1a/1b Meridian Estate, Carnbane Business Park, Newry,
 Co. Down, BT35 6QH. Tel: 02830 835 500 Fax: 02830 835 544

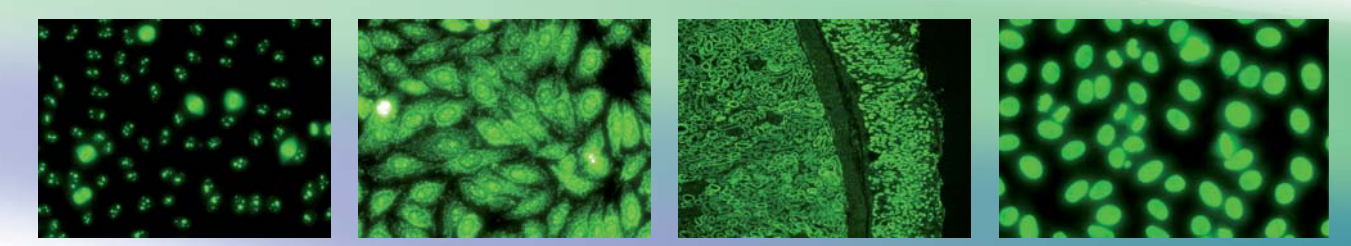
Pharmapark, Chapelizod, Dublin 20, Ireland
 Tel: 01 6305 149 Fax: 01 6305 317

microboard

INTRODUCING THE NEW ZENIT REAGENTS FOR IFA AND ELISA METHODS

A. MENARINI DIAGNOSTICS
 IS PROUD TO INTRODUCE ZENIT,
 THE BRAND NEW COMPREHENSIVE PANEL
 OF REAGENTS ESPECIALLY DESIGNED,
 DEVELOPED AND MANUFACTURED
 FOR IFA AND ELISA METHODS.

A STEP FORWARD IN
 EXPANDING AUTOIMMUNITY.

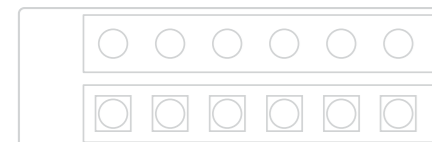


EXPANDING
 AUTOIMMUNITY

cod. 39057

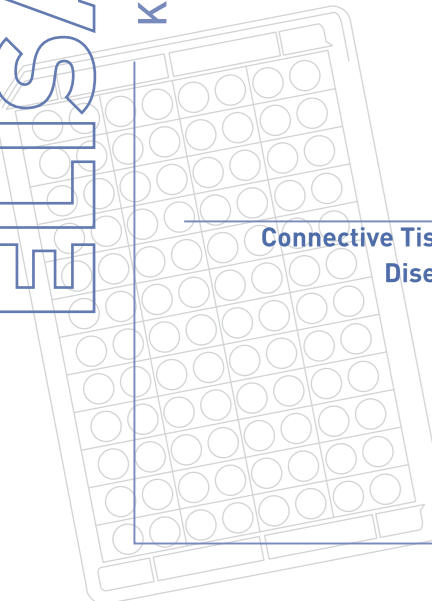


IFA



Code	Description	Determinations	Code	Description	Determinations	Code	Description	Determinations	Code	Description	Determinations
Kits	37788 ANA HEp-2 Cells	5x12 well slides	39497 ANCA (ethanol-fixed hPMN)	12 wells	38047 ASMA Positive Control	0,5ml	IFA Conjugates	38013 IgG FITC with Evans Blue	5ml		
	37805 ANA HEp-2 Cells	20x12 well slides	37822 ANCA (formalin-fixed hPMN)	6 wells	38046 AGPA Positive Control	0,5ml		39614 IgG FITC with Evans Blue	15ml		
	37783 Mouse Kidney/Stomach	6x8 well slides	39498 ANCA (formalin-fixed hPMN)	12 wells	38039 Anti-PCNA Positive Control	0,5ml		38012 IgA FITC with Evans Blue	5ml		
	37784 Mouse Kidney/Stomach/Liver	6x8 well slides	37820 ANCA (ethanol+formalin-fixed hPMN)	6+6 wells	38034 LKM Positive Control	0,5ml		39612 IgA FITC with Evans Blue	15ml		
	37787 Rat Kidney/Stomach/Liver	6x8 well slides	38070 Keratin (Rat Esophagus)	6 wells	38044 n-DNA Positive Control	0,5ml		39729 IgM FITC with Evans Blue	5ml		
	37808 HEp-2/Mouse Kidney/Stomach	6x8 well slides	38071 Primate Pancreas	4 wells	38032 EMA Positive Control	0,5ml		38011 Polyvalent FITC (IgG/IgA) with Evans Blue	5ml		
	38061 HEp-2/Mouse Kidney/Stomach/Liver	8x6 well slides	39518 Primate Pancreas	8 wells	38031 cANCA Positive Control	0,5ml		39610 Polyvalent FITC (IgG/IgA) with Evans Blue	15ml		
	38448 HEp-2/Rat Kidney/Stomach/Liver	8x6 well slides	38072 GBM (Primate Kidney)	6 wells	37983 p-ANCA Positive Control	0,5ml		39608 Polyvalent FITC (IgG/IgA/IgM) with Evans Blue	5ml		
	37811 nDNA (Crithidia luciliae)	8x6 well slides	39505 Primate Heart Muscle	6 wells	38033 anti-Keratin Positive Control	0,5ml		39606 Polyvalent FITC (IgG/IgA/IgM) with Evans Blue	15ml		
	38060 Endomysial (Primate Distal Esophagus)	6x8 well slides	39504 Primate Ovary	4 wells	38041 anti-ICAb Positive Control	0,5ml		38010 B FITC for islet cells	5ml		
	37790 Endomysial (Primate smooth muscle)	8x6 well slides	39517 Primate Testis	4 wells	38030 GBM Positive Control	0,5ml		38009 IgG FITC without Evans Blue	5ml		
	37819 ANCA IFA (ethanol-fixed hPMN)	8x6 well slides	39503 Primate Cerebellum	6 wells	38048 anti-IC Positive Control	0,5ml		39613 IgG FITC without Evans Blue	15ml		
	37818 ANCA IFA (formalin-fixed hPMN)	8x6well slides	39502 Primate Sciatic Nerve	6 wells	38045 anti-IC Positive Control pemphigus vulgaris	0,5ml		38008 IgA FITC without Evans Blue	5ml		
	37803 ANCA IFA (ethanol+formalin-fixed hPMN)	8x6+6 well slides	39501 Primate Thyroid	4 wells	38043 anti-IC Positive Control pemphigus foliaceus	0,5ml		39611 IgA FITC without Evans Blue	15ml		
	38638 Keratin (Rat Esophagus)	8x6 well slides	39500 Primate Esophagus	4 wells	38042 anti-BMZ Positive Control pemphigoid	0,5ml		39728 IgM FITC without Evans Blue	5ml		
	38636 Primate Pancreas	10x4 well slides	39499 Primate Adrenal Gland	4 wells	38040 anti-Heart/Skel Pos. Control	0,5ml		38006 Polyvalent FITC (IgG/IgA) without Evans Blue	5ml		
	38637 GBM (Primate Kidney)	8x6 well slides	39514 Primate Stomach	6 wells	38038 anti-Thyroid/Microsomal Pos. Control ATA	0,5ml		39609 Polyvalent FITC (IgG/IgA) without Evans Blue	15ml		
Substrate Slides	37807 ANA HEp-2 Cells	6 wells	39515 Primate Skeletal Muscle	6 wells	38029 anti-Adrenal Positive Control	0,5ml		39607 Polyvalent FITC (IgG/IgA/IgM) without Evans Blue	5ml		
	37806 ANA HEp-2 Cells	12 wells	39516 Primate Salivary Gland	6 wells	38051 anti-Steroidal Cell Positive Control	0,5ml		39605 Polyvalent FITC (IgG/IgA/IgM) without Evans Blue	15ml		
	37785 Mouse Kidney/Stomach	8 wells	IFA Controls	38005 IFA Negative Control	0,5ml		Other IFA components	38019 PBS for 1 liter	for 1 liter		
	37786 Mouse Kidney/Stomach/Liver	8 wells		38651 GBM IFA Negative Control	0,5ml			38018 Sample Diluent for IFA	60ml		
	37997 Rat Kidney/Stomach/Liver	8 wells		38058 ANA Pattern Ctrl I (Homo/speck/centro/nucleo/periph)	5x0,5ml			38652 GBM Buffered Diluent	60ml		
	38446 HEp-2/Mouse Kidney/Stomach	8 wells		38056 ANA Pattern Ctrl II (homo/speck/nucleo)	3x0,5ml			38650 Islet Cell Buffered Diluent	60ml		
	38062 HEp-2/Mouse Kidney/Stomach/Liver	6 wells		38057 ANA Positive Control homogeneous	0,5ml			38017 GBM Enhancing Buffer for GBM Kit	5ml		
	38447 HEp-2/Rat Kidney/Stomach/Liver	6 wells		38055 ANA Positive Control speckled	0,5ml			38016 Microscop Slide Coverglass 24x60mm	box of 12		
	37791 nDNA (Crithidia luciliae)	6 wells		38054 ANA Positive Control centromere	0,5ml			38639 Microscop Slide Coverglass Long	box of 12		
	38059 EMA Primate Distal Esophagus	8 wells		38053 ANA Positive Control nucleolar	0,5ml			38015 Mounting Medium Dropper Vial	5ml		
	37810 EMA Primate Smooth Muscle	6 wells		38052 ANA Positive Control peripheral	0,5ml			38014 Counterstain Evans Blue	1.0ml		
	37821 ANCA (ethanol-fixed hPMN)	6 wells		38050 AMA Positive Control	0,5ml			37982 Optical Standard Slide	8 wells		

ELISA



Code	Description	Determinations	Code	Description	Determinations	Code	Description	Determinations	Code	Description	Determinations		
Rheumatoid Arthritis	38105* CCP	96 tests	Kits	37793 ds-DNA	96 tests	Kits	38068 ASCA IgG	96 tests	Kits	38090 GQ1b IgM	96 tests		
	**for Austria, Belgium, The Netherlands, Luxembourg, Greece, Portugal			38102 Histone antibodies (AHA)	96 tests		38103 Anti-Gastric Paretal Cell Antibody (AGPA)	96 tests		38089 Galactocerebroside IgG	96 tests		
	39513** CCP	96 tests		39520 Ribosomal P	96 tests		38101 Intrinsic Factor (IF)	96 tests		38088 Galactocerebroside IgM	96 tests		
	**for Italy, Spain, France, Germany, UK			Coagulation	37813 Cardiolipin IgA	96 tests		Vasculitis	38083 Anti-Neutrophil Cytoplasmic antibodies (ANCA) Screen	96 tests			
	38064 Rheumatoid Factor (RF) IgA	96 tests		37792 Cardiolipin IgG	96 tests		37981 Myeloperoxidase antibodies (MPO)	96 tests		38086 GD1a IgG	96 tests		
	37978 Rheumatoid Factor (RF) IgM	96 tests		37812 Cardiolipin IgM	96 tests		37980 Proteinase 3 antibodies (PR3)	96 tests		38086 GD1a IgM	96 tests		
	38065 Rheumatoid Factor (RF) IgG	96 tests		38106 Cardiolipin Screen	96 tests		38104 Glomerular Basement Membrane (GBM)	96 tests		Endocrine	38099 Thyroglobulin (Tg)	96 tests	
	38063 Rheumatoid Factor (RF) screen	96 tests		37817 Anti-β2-GP1 IgG	96 tests		Autoimmune Liver Disease	38098 Mitochondrial (M2)	96 tests	ELISA Components	38100 Thyroid peroxidase (TPO)	96 tests	
	37802 ANA Screen	96 tests		37800 Anti-β2-GP1 IgM	96 tests			38084 LKM-1	96 tests		38004 ELISA serum diluent 1	60ml	
Connective Tissue Disease	37816 Sm/RNP [ENA]	96 tests		Gastrointestinal	37789 Gliadin IgA (AGA)	96 tests		Cardiovascular	38085 anti-oxidized LDL antibodies (oxLDL)	48 tests		38002 ELISA serum diluent 3	60ml
	37815 Sm [ENA]	96 tests		37809 Gliadin IgG (AGA)	96 tests			Neuropathies	38097 GM1 IgG	96 tests		38000 ELISA Powder Wash Buffer 1	for 1 liter
	37814 SS-A(Ro) [ENA]	96 tests		37979 Gliadin Screen IgA/IgG (AGA)	96 tests				38096 GM1 IgM	96 tests		38329 ELISA Powder Wash Buffer 2	for 1 liter
	37794 SS-B(La) [ENA]	96 tests		37795 Recombinant Human tTG (IgA)	96 tests				38095 asialo GM1 IgG	96 tests		38001 ELISA Powder Wash Buffer [ox-LDL]	for 1 liter
	37798 Scl-70 [ENA]	96 tests		37796 Recombinant Human tTG (IgG)	96 tests				38094 asialo GM1 IgM	96 tests		37999 ELISA stop solution	12ml
	37799 Jo-1 [ENA]	96 tests		38066 Recombinant Human tTG Screen (IgA and IgG)	96 tests				38093 GD1b IgG	96 tests		37998 ANA ELISA stop solution	12ml
	37797 ENA Screen	96 tests		37801 Tissue transglutaminase (tTG) IgA [guinea pig]	96 tests				38092 GD1b IgM	96 tests		38107 Liquid Enzyme Substrate pNPP	12ml
	39519 ENA Profile	12 tests		38067 ASCA IgA	96 tests				38091 GQ1b IgG	96 tests		38108 ANA Liquid Enzyme Substrate	12ml